

**Venetia Valley Elementary School
Replacement Classroom Building
San Rafael
Unified School District**

177 North San Pedro Rd
San Rafael, CA 94903

**MECHANICAL EXHAUST
CUT SHEET**

02.23.2023

Model: SQ-95-VG

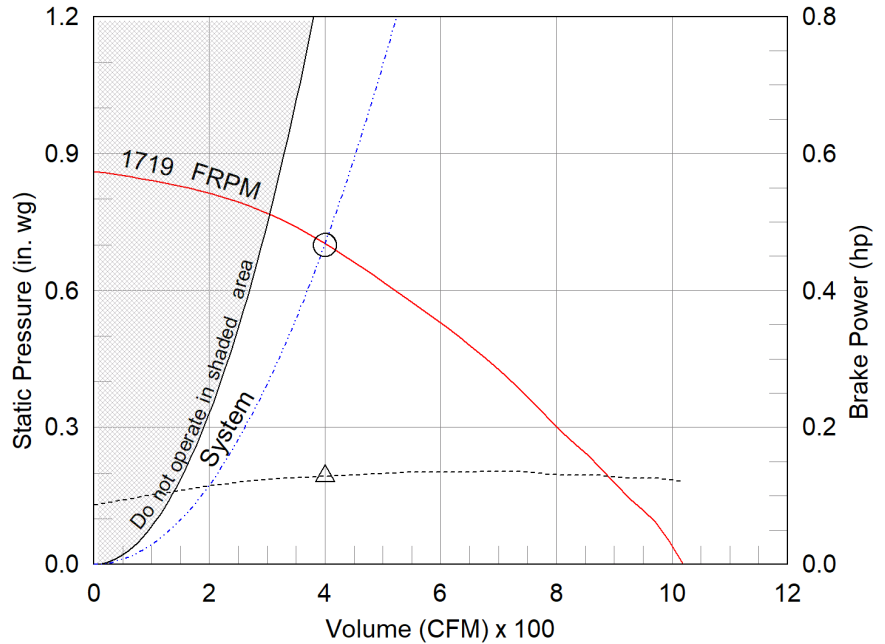
Direct Drive Centrifugal Inline Fan

Dimensional	
Quantity	1
Weight w/o Acc's (lb)	49
Weight w/ Acc's (lb)	57

Performance	
Requested Volume (CFM)	400
Actual Volume (CFM)	400
Total External SP (in. wg)	0.7
Fan RPM	1719
Operating Power (hp)	0.13
Elevation (ft)	325
Airstream Temp.(F)	70
Air Density (lb/ft3)	0.074
Tip Speed (ft/min)	4,895
Static Eff. (%)	34

Misc Fan Data	
Fan Eff. Index (FEI)	-
Outlet Velocity (ft/min)	400

Motor	
Motor Mounted	Yes
Size (hp)	1/6
Voltage/Cycle/Phase	115/60/1
Enclosure	TENV
Motor RPM	1725
Windings	1
FLA (Amps)	2.2
Min. Circuit Ampacity (MCA)	3
Max. Overcurrent Protection (MOP)	15
Short Circuit Current Rtg (SCCR)	5 kA



- △ Operating Bhp point
- Operating point at Total External SP
- Fan curve
- - - System curve
- - - Brake horsepower curve

Nameplate Model: SQ-95-VG

Sound Power by Octave Band

Sound Data	62.5	125	250	500	1000	2000	4000	8000	LwA	dBA	Sones
Inlet	80	79	74	67	61	48	41	40	70	59	9.2
Radiated	81	81	68	61	56	42	35	36	68	57	8.7

Notes:

All dimensions shown are in units of in.
*NEC FLA, MCA and MOP are for reference only – based on tables 430.248 or 430.25 of National Electric Code 2020. Actual motor FLA may vary, for sizing thermal overload, consult factory. MCA and MOP values shown only account for the motor, not accessories (damper actuator, field supplied VFD, etc).
LwA - A weighted sound power level, based on ANSI S1.4
dBA - A weighted sound pressure level, based on 11.5 dB attenuation per Octave band at 5 ft - dBA levels are not licensed by AMCA International
Sones - calculated using AMCA 301 at 5 ft



Model: SQ-95-VG

Direct Drive Centrifugal Inline Fan

Standard Construction Features:

- Galvanized steel housing - Backward inclined composite (sizes 60-95) or aluminum (sizes 97-160) wheel - Two bolted access panels - Integral duct connection flanges - Ball bearing motors (sizes 97-160 and all vari-green motors), sleeve bearing motors (sizes 60-95) - Corrosion resistant fasteners

Selected Options & Accessories:

Motor - Vari-Green EC motor

Control - Vari-Green Dial on Exterior of Fan Housing, Mounted and Wired

UL/cUL 705 Listed - "Power Ventilators"

Junction Box Mounted and Wired

Switch, NEMA-1, Toggle, Shipped Separate

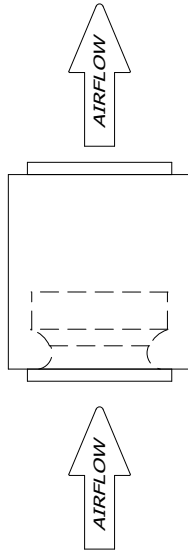
Composite Wheel Material

Motor Cover

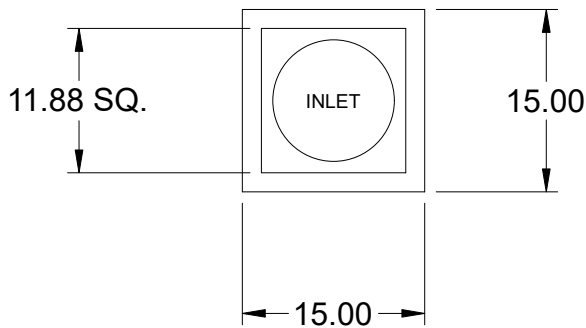
Unit Warranty: 1 Yr (Standard)

SQ-95-VG

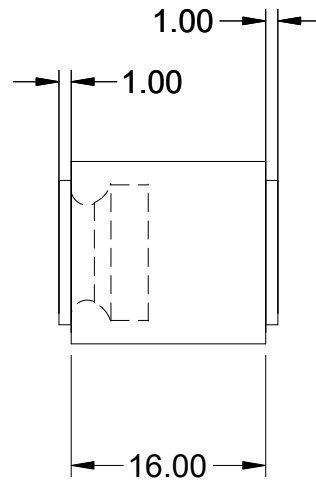
Direct Drive Centrifugal Inline Fan



TOP VIEW



END VIEW



SIDE VIEW

Notes: All dimensions shown are in units of in.

AMCA



AMCA Licensed for Sound and Air Performance. Power rating (BHP/kW) does not include transmission losses.

Greenheck Fan Corporation certifies that the model shown herein is licensed to bear the AMCA Seal. The ratings shown are based on tests and procedures performed in accordance with AMCA Publication 211 and AMCA Publication 311 and comply with the requirements of the AMCA Certified Ratings Program. Performance certified is for installation type B: Free inlet, Ducted outlet. Power rating (BHP/kW) does not include transmission losses. Performance ratings do not include the effects of appurtenances (accessories). The inlet sound ratings shown are loudness values in fan sones at 5 ft. (1.5 m) in a hemispherical free field calculated per AMCA Standard 301. Values shown are for installation type B: free inlet hemispherical sone levels. dBA levels are not licensed by AMCA International. The AMCA Certified Ratings Seal applies to inlet sone ratings only. Radiated (casing) sound data is the sound generated through the fan housing when the fan is ducted on both the inlet and outlet.

Model: SQ-95-VG

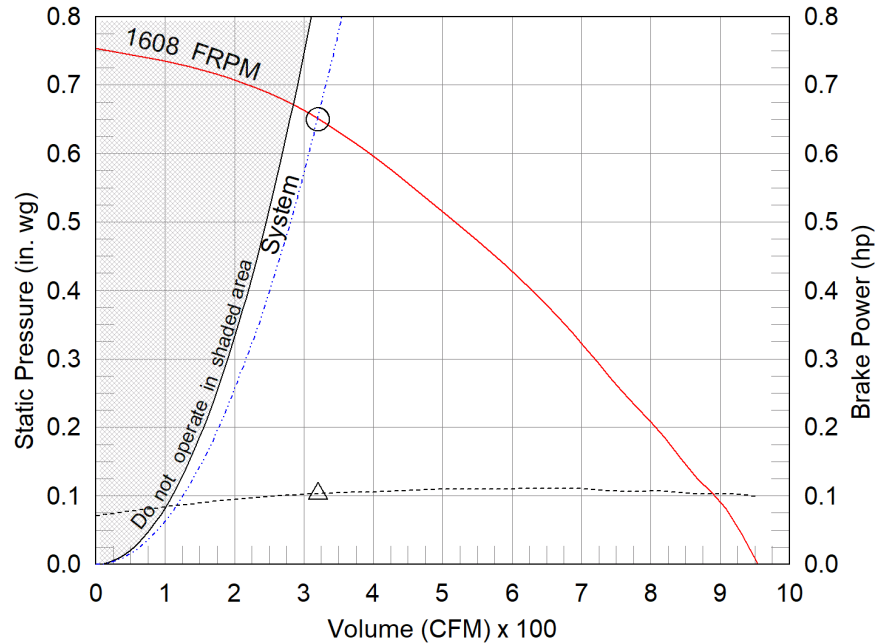
Direct Drive Centrifugal Inline Fan

Dimensional	
Quantity	1
Weight w/o Acc's (lb)	49
Weight w/ Acc's (lb)	57

Performance	
Requested Volume (CFM)	320
Actual Volume (CFM)	320
Total External SP (in. wg)	0.65
Fan RPM	1608
Operating Power (hp)	0.1
Elevation (ft)	325
Airstream Temp.(F)	70
Air Density (lb/ft3)	0.074
Tip Speed (ft/min)	4,579
Static Eff. (%)	32

Misc Fan Data	
Fan Eff. Index (FEI)	-
Outlet Velocity (ft/min)	320

Motor	
Motor Mounted	Yes
Size (hp)	1/6
Voltage/Cycle/Phase	115/60/1
Enclosure	TENV
Motor RPM	1725
Windings	1
FLA (Amps)	2.2
Min. Circuit Ampacity (MCA)	3
Max. Overcurrent Protection (MOP)	15
Short Circuit Current Rtg (SCCR)	5 kA



- △ Operating Bhp point
- Operating point at Total External SP
- Fan curve
- - - System curve
- Brake horsepower curve

Nameplate Model: SQ-95-VG

Sound Power by Octave Band

Sound Data	62.5	125	250	500	1000	2000	4000	8000	LwA	dBA	Sones
Inlet	79	78	73	65	60	49	40	39	69	57	8.5
Radiated	80	80	67	59	55	43	34	35	67	55	8.1

Notes:

All dimensions shown are in units of in.
*NEC FLA, MCA and MOP are for reference only – based on tables 430.248 or 430.25 of National Electric Code 2020. Actual motor FLA may vary, for sizing thermal overload, consult factory. MCA and MOP values shown only account for the motor, not accessories (damper actuator, field supplied VFD, etc).
LwA - A weighted sound power level, based on ANSI S1.4
dBA - A weighted sound pressure level, based on 11.5 dB attenuation per Octave band at 5 ft - dBA levels are not licensed by AMCA International
Sones - calculated using AMCA 301 at 5 ft



Model: SQ-95-VG

Direct Drive Centrifugal Inline Fan

Standard Construction Features:

- Galvanized steel housing - Backward inclined composite (sizes 60-95) or aluminum (sizes 97-160) wheel - Two bolted access panels - Integral duct connection flanges - Ball bearing motors (sizes 97-160 and all vari-green motors), sleeve bearing motors (sizes 60-95) - Corrosion resistant fasteners

Selected Options & Accessories:

Motor - Vari-Green EC motor

Control - Vari-Green Dial on Exterior of Fan Housing, Mounted and Wired

UL/cUL 705 Listed - "Power Ventilators"

Junction Box Mounted and Wired

Switch, NEMA-1, Toggle, Shipped Separate

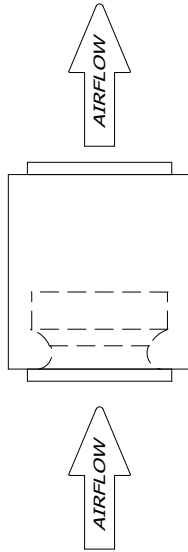
Composite Wheel Material

Motor Cover

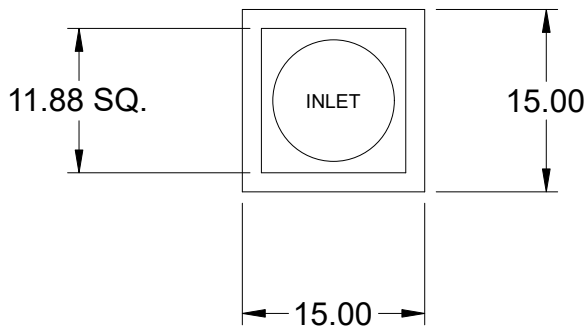
Unit Warranty: 1 Yr (Standard)

SQ-95-VG

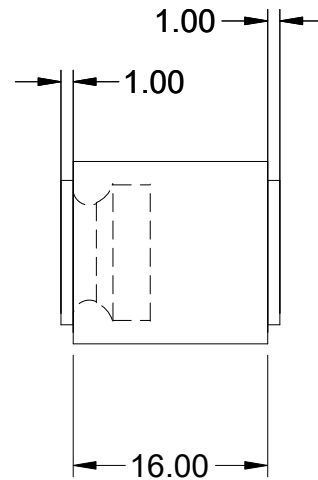
Direct Drive Centrifugal Inline Fan



TOP VIEW



END VIEW



SIDE VIEW

Notes: All dimensions shown are in units of in.

AMCA



AMCA Licensed for Sound and Air Performance. Power rating (BHP/kW) does not include transmission losses.

Greenheck Fan Corporation certifies that the model shown herein is licensed to bear the AMCA Seal. The ratings shown are based on tests and procedures performed in accordance with AMCA Publication 211 and AMCA Publication 311 and comply with the requirements of the AMCA Certified Ratings Program. Performance certified is for installation type B: Free inlet, Ducted outlet. Power rating (BHP/kW) does not include transmission losses. Performance ratings do not include the effects of appurtenances (accessories). The inlet sound ratings shown are loudness values in fan sones at 5 ft. (1.5 m) in a hemispherical free field calculated per AMCA Standard 301. Values shown are for installation type B: free inlet hemispherical sone levels. dBA levels are not licensed by AMCA International. The AMCA Certified Ratings Seal applies to inlet sone ratings only. Radiated (casing) sound data is the sound generated through the fan housing when the fan is ducted on both the inlet and outlet.

Model: SP-A390-VG

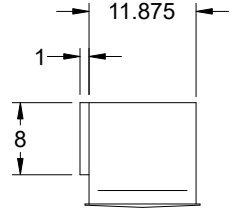
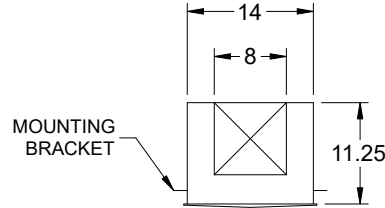
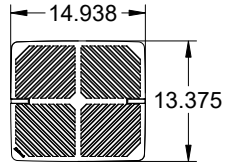
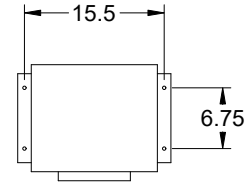
Ceiling Exhaust Fan

Standard Construction Features:

- Corrosion resistant galvanized steel scroll and housing - Sound absorbing insulation - White designer non-yellowing grille - Rectangular outlet duct collar with integral spring loaded backdraft damper - Double inlet forward curved wheel - Plug type disconnect - Adjustable mounting brackets - Field rotatable discharge

Selected Options & Accessories:

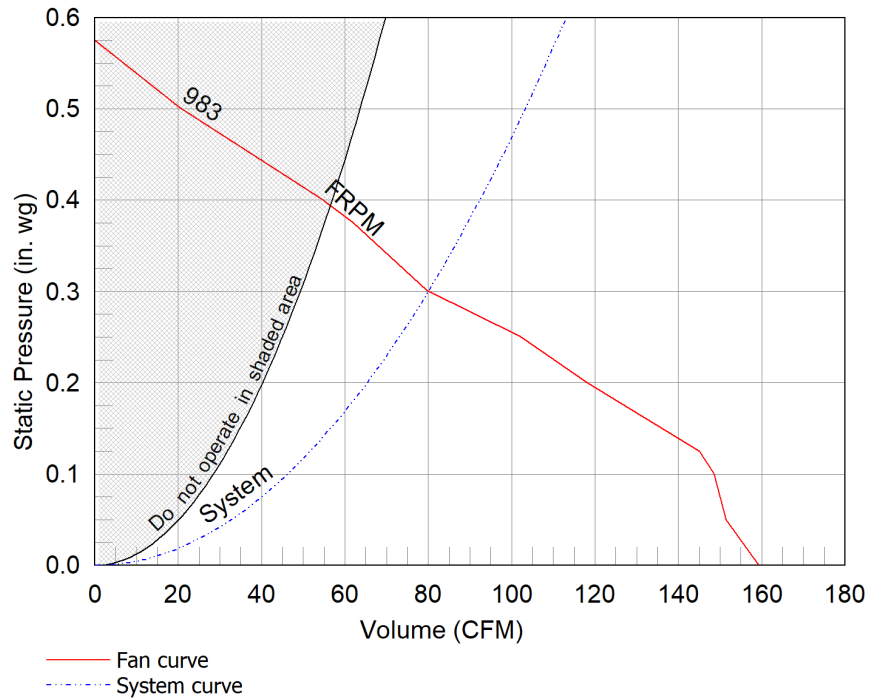
Motor rated for continuous use
Motor - Vari-Green EC motor w/Mounted Potentiometer Dial
UL/cUL 507 Listed - Electric Fan
Adjustable easy installation mounting bracket
Standard Grille
Polypropylene Wheel Material



Dimensional	
Quantity	1
Weight w/o Acc's (lb)	24
Weight w/ Acc's (lb)	24

Performance	
Requested Volume (CFM)	80
Actual Volume (CFM)	80
Total External SP (in. wg)	0.3
Fan RPM	983
* FLA (A)	1.5
Elevation (ft)	325
Airstream Temp.(F)	70
Air Density (lb/ft3)	0.074
Sones	2.5

Motor	
Motor Mounted	Yes
** Input Watts (W)	14
Voltage/Cycle/Phase	115/60/1
Enclosure	TENV
Control Input Voltage	4



Notes:

All dimensions shown are in units of in.
*FLA is approximate and will vary slightly with the motor.
Sones - calculated using AMCA 301 at 5 ft
** Wattage is shown at free air.
** Wattage is approximate and may vary between motors.



AMCA



AMCA Licensed for Sound and Air Performance. Power Rating (Watt) includes transmission losses.

Greenheck Fan Corporation certifies that the model shown herein is licensed to bear the AMCA Seal. The ratings shown are based on tests and procedures performed in accordance with AMCA Publication 211 and AMCA Publication 311 and comply with the requirements of the AMCA Certified Ratings Program. Performance certified is for installation type B: Free inlet, Ducted outlet. Performance ratings include the effects of an inlet grille and backdraft damper. Speed (RPM) shown is nominal. Performance is based on actual speed of test. The watt ratings shown are at free air. The sound ratings shown are for loudness values in spherical sones at 5 ft. (1.5m) in a spherical free field calculated per Annex B of AMCA 311. Values shown are for installation type B: free inlet spherical sone levels. The AMCA Certified Ratings Seal applies to sone ratings only.